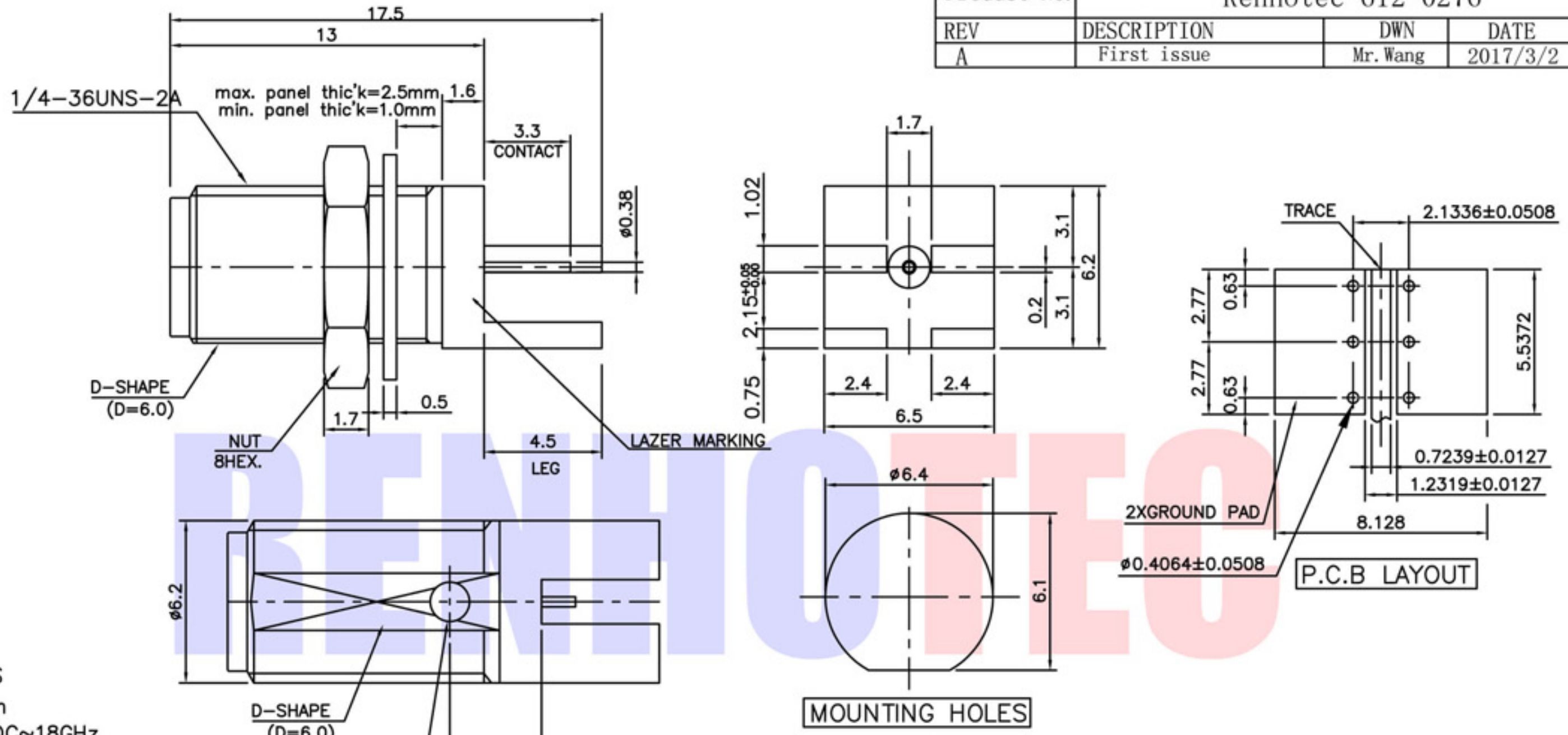




Product NO.	Renhotec-612-0276			
REV	DESCRIPTION	DWN	DATE	APPROVEN
A	First issue	Mr. Wang	2017/3/2	John kine



NOTES.

ELECTRICAL RATINGS
 Impedance : 50 ohm
 Frequency Range : DC~18GHz
 Insulation Resistance : 5000MΩ min
 Contact Resistance : < 3mΩ
 Working Voltage : 335 VRMS max
 Dielectric Withstanding Voltage : 1000V min

MECHANICAL DATA
 Coupling nut torque; 12Ncm-170Ncm
 Coupling nut retention force; >200N
 Life; 500 matings.
 Contact captivation; >27N

ENVIRONMENTAL DATA
 Operating and Storage Temperature range; -45°C~85°C/-65°C~125°C
 Vibration test; MIL-STD-202,Method204,Condition D.
 Mechanical Shock; MIL-STD-202,Method213,Condition
 Moisture resistance; MIL-STD-202,Method106.

****Center contact EPOXY captivated**
 *100% Specification guarantee mentioned on the drawing + COC

Connector parts	Materials	Finish
Body	Brass	Gold Plated 0.1micron over
Center contact	Beryllium copper	Electroless Nickel 2~4micron
Insulator	TEFLON	Gold Plated 0.1micron under
Lock washer	Stainless steel	-
Nut	Brass	Gold Plated 0.1micron under

SMA End Launch Bulkhead Jack Receptacle
 -Round Contact(2.00Board)

NOTE:		
Tolerance	0-6 ±0.10 6-30 ±0.20 30-120 ±0.30 Angular ±2°	
DRAWN Zelin. Zhang 2017/3/2	View	
CHECKED	UNIT	MM
APPROVALS John Kine 2017/3/2	SCALE	1:1

RENHOTEC www.renhotec.com **RENHOTEC GROUP**

Name: Edge Mount SMA Jack

SIZE A	Product NO. RHT-612-0276	REV B
DateTime 2017/3/2	CAD FILE D/company drawings/BD	SHEET: 1 OF 1